

SELECT PROPERTIES

Telephone 01296 747045
Facsimile 0870 051 7579
e-mail sp@french-houses.demon.co.uk
website www.selprop.com

Park Cottage,
Lower Hartwell,
Aylesbury,
Buckinghamshire, HP17 8NR

REF BG229-49432

LOCATION

This property is in the département of the Lot not far from the popular market town of Gourdon. It is in a hamlet with lovely views over the surrounding countryside.

DESCRIPTION

The property consists of two adjoining gîtes/cottages with a total floor area of 106 m² that could be converted into a single house. There is covered parking space in the grounds that extend to about 2,800 m². In addition it is possible to purchase a liner swimming pool of 11m.x 5.3m. with a lovely surrounding terrace with land of 500 m².



Gîte 1



Gîte 1



Gîte 2



Gîte 2

REF BG229-49432

Gîte 1 for 5 guests.

The ground floor accommodation comprises a tiled, covered terrace, a box room under the staircase, a farmhouse kitchen of 23 m² with French doors to the terrace, a bathroom of 3 m² with a bath and wash hand basin, each with burnt earth tiled floors, and a separate loo.

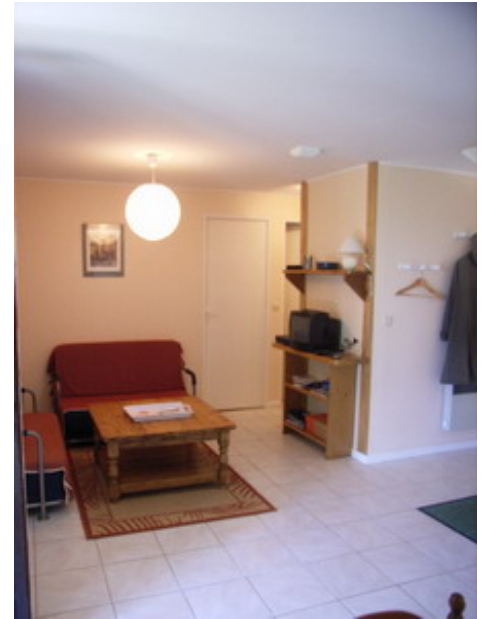
On the first floor there are two bedrooms with parquet floors and built-in cupboards. One of 10 m² has exposed beams and the other measures 8 m².



Gîte 1



Gîte 1



Gîte 2

Gîte 2



Gîte 2 for 7 guests.

The ground floor accommodation comprises a farmhouse kitchen of 34.5 m² with a tiled floor and French doors to the tiled, covered terrace, a bedroom of 9.5 m² with a parquet floor, a tiled bathroom and shelving and a separate loo.

On the first floor there are two bedrooms with parquet floors

PRICE 229,600 € including Agents' fees.

The above details are meant as a guide only. They are only indicative of the property, do not form any part of a contract and may be changed.